

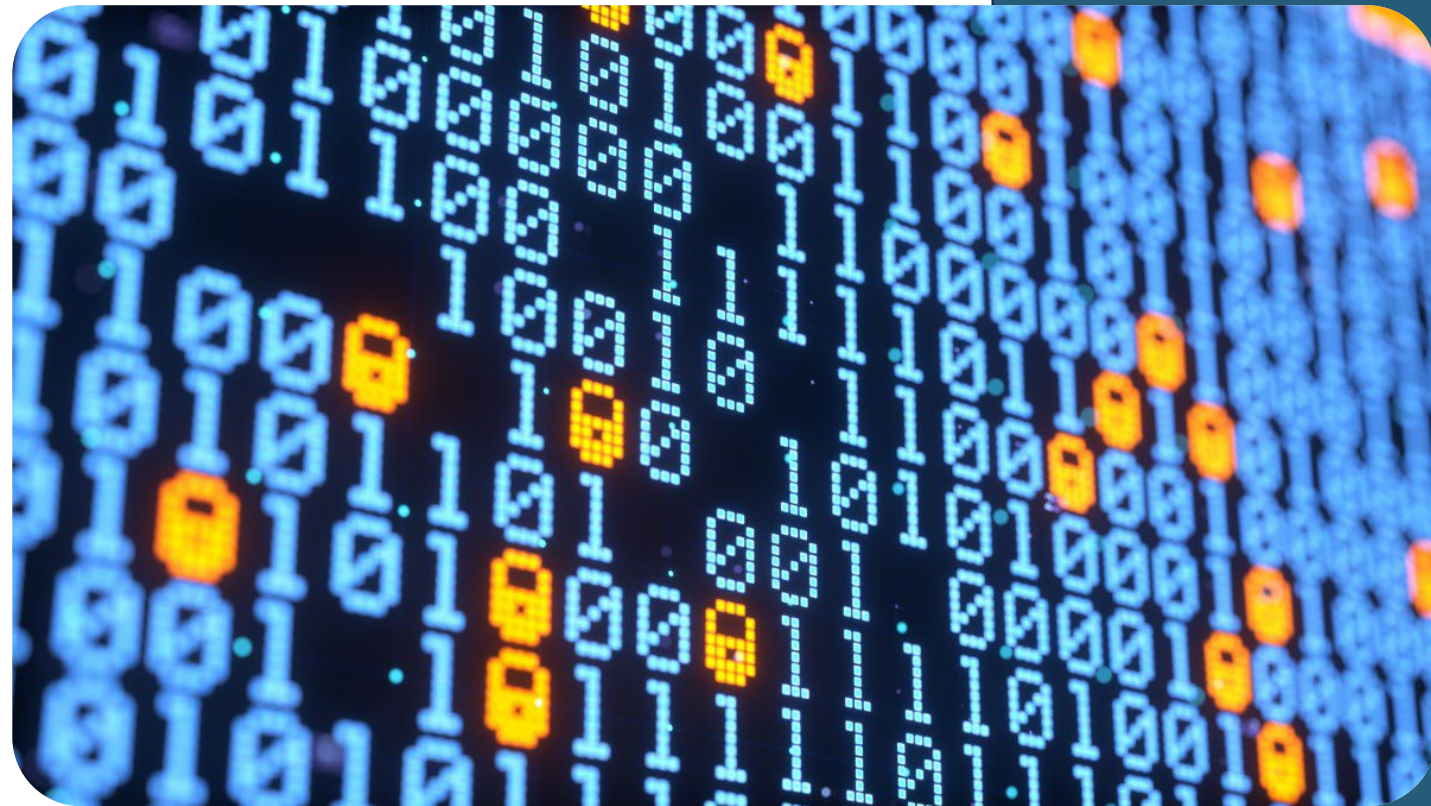


# The Role of Data in AI Predictive Models

Dr.Zeynab Barzegar

# Introduction

- ❖ Importance of Data in AI Models
- ❖ Data Gathering
- ❖ Key Steps in Data Preprocessing
- ❖ Data in AI Models



# Importance of Data in AI Models

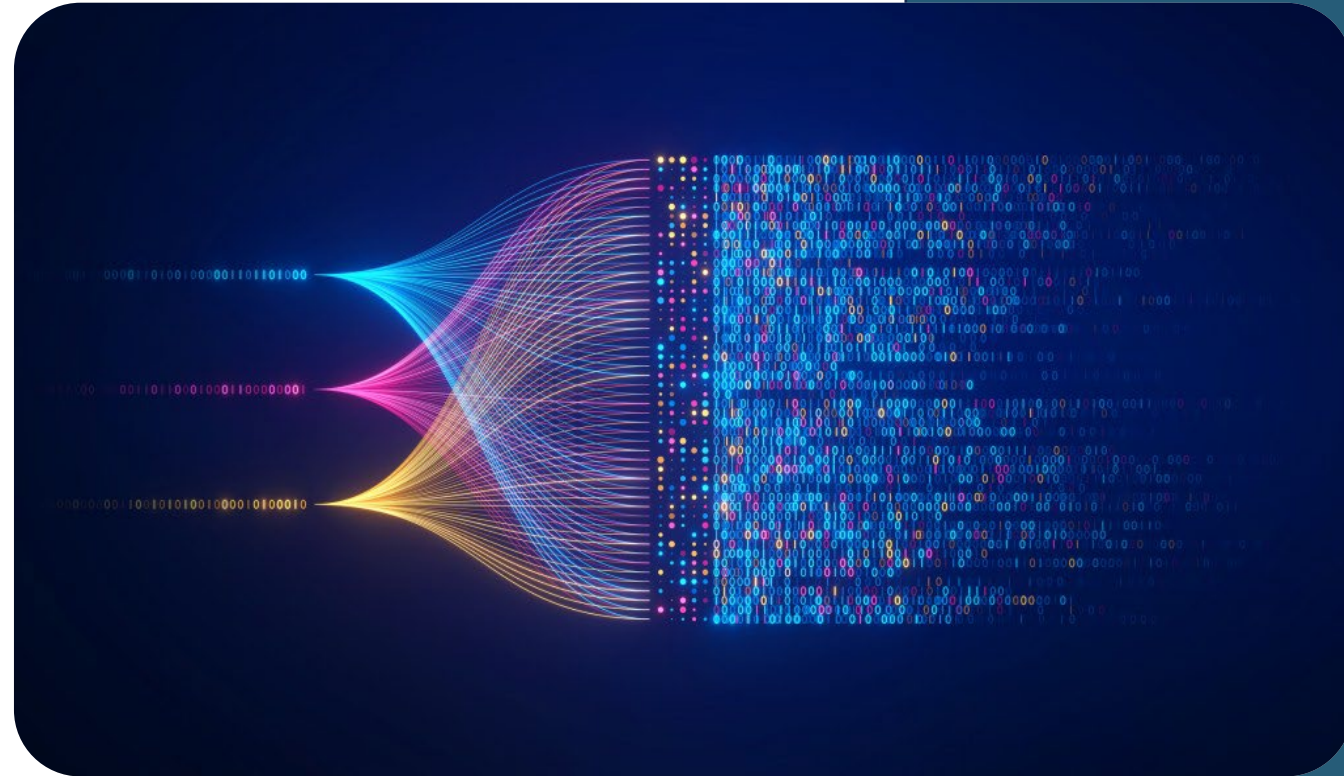


- ❖ Clean and structured data is critical for accurate predictions
- ❖ Preprocessing enhances:
  - ❖ Model Accuracy: By reducing noise and irrelevant data
  - ❖ Generalization: Ensures models perform well on unseen data
  - ❖ Efficiency: Reduces computational costs and overfitting risks



# Data Gathering

- ❖ In-house Data Collection
- ❖ Automatic Data
- ❖ Manual Data Collection
- ❖ Off-the-shelf Datasets



# Data Preprocessing



## Data Cleaning

- ❖ **Definition:** The process of identifying and correcting (or removing) inaccurate records from a dataset.
- ❖ **Handling Missing Values:**
  - **Deletion:** Removing records with missing values
  - **Imputation:** Filling in missing values using statistical methods (e.g., mean, median, mode)
  - **Predictive Modeling:** Using algorithms to predict and fill missing values based on other data
- ❖ **Outlier Detection and Removal:**
  - Identifying data points that deviate significantly from the rest of the dataset
  - Statistical tests (e.g., Z-score, IQR)
  - Visualization techniques (e.g., box plots)

# Data Preprocessing



## Data Transformation

- ❖ **Definition:** Modifying the format or structure of data to make it suitable for analysis
- ❖ **Normalization :**
  - Scaling numerical features to a common range (e.g., or  $[-1, 1]$ )
  - Common methods include Min-Max scaling and Z-score normalization
- ❖ **Encoding Categorical Variables**
  - Converting categorical data into numerical format for model compatibility



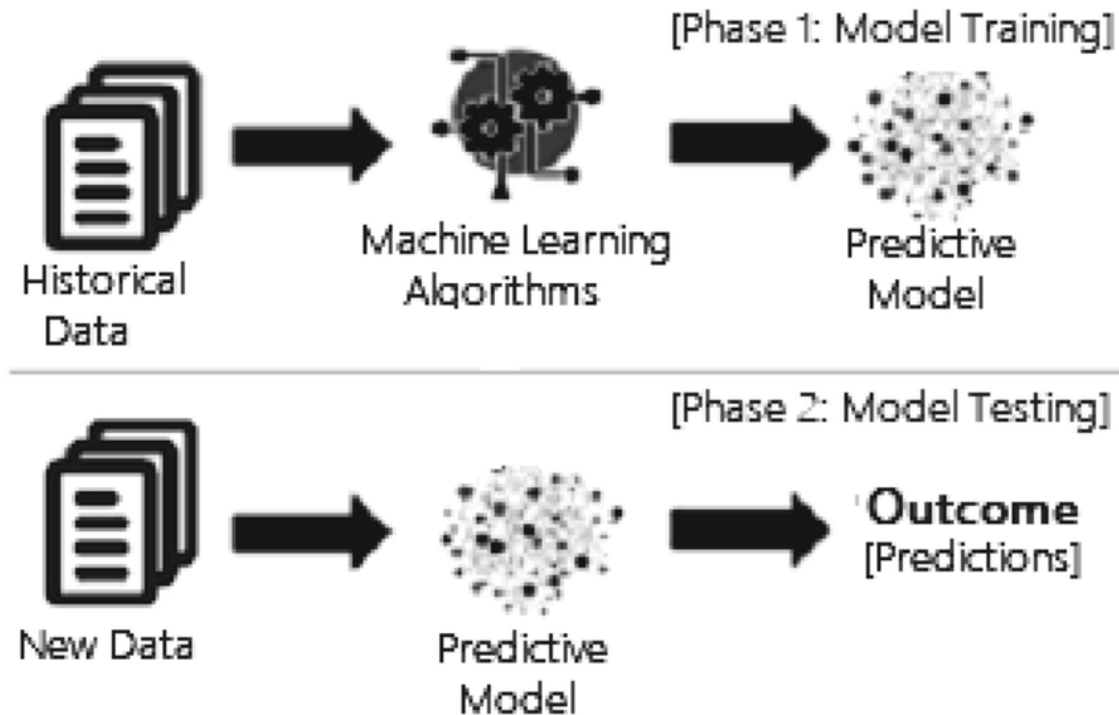
# Feature Engineering



- ❖ **Definition:** The process of using domain knowledge to create new input features from existing ones
- ❖ **Creating New Features**
- ❖ **Polynomial Features**
- ❖ **Feature Selection**

# Data in AI Models

- ❖ The quality, structure, and preprocessing of data directly impact the performance and accuracy of AI systems





# Role of Data in AI Models

- ❖ Foundation for Learning
- ❖ Foundation for Learning
- ❖ Decision-Making Support
- ❖ Continuous Improvement





**Thank you!**